

NEXGEN

METAL DESIGN SYSTEMS

EXPRESSION+

Concealed Fastener Panel Series

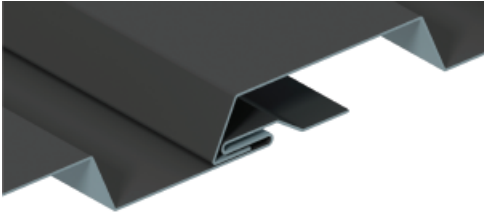
The EXPRESSION+ Concealed Fastener Panel Series is an offering of contemporary metal panels for the building facade. These contoured panels deliver clean lines and high end aesthetics. The series includes seven design options available in 16" widths that can be installed horizontally or vertically with concealed fasteners. Custom design services to include tapering are available. EXPRESSION+ architectural panels are suitable for walls, equipment screens, mansards, and soffits.

| material | panel thickness | | available finishes |
|-------------------------|----------------------|---------------------|---|
| aluminum ¹ | ■ <u>.050"</u> 16GA | ■ <u>.040"</u> 18GA | Precoat PDVF2 - Metallics - Micas, Anodized, Weathered |
| zinc ¹ | ■ <u>.039"</u> 1.0mm | | Natural - Pre-Weathered - Colored - Back-coated |
| stainless ¹ | ■ <u>.036"</u> 20GA | ■ <u>.030"</u> 22GA | Directional - Non-Directional Specialized Finishes - Matte - 2B |
| galvanized ¹ | ■ <u>.036"</u> 20GA | ■ <u>.030"</u> 22GA | Precoat PDVF2 - Weathered |

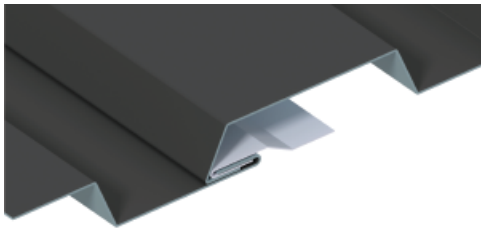
- 16" panel coverage
- 7/8" deep panels with interlocking seams
- 4' to 20'-6" panel lengths available
- Zinc panel lengths are 10'-0" when vertical
- 10 - 20 - 30 years painted finish warranties available
- Certain materials and finishes are subject to minimum order requirements
- 1-Year manufacturer's workmanship warranty
- Custom designs available to include tapering
- Panels are folded using Industry 4.0 Compliant Manufacturing Technology
- Metal panels are recyclable
- Metal panels are NFPA 285 compliant
- We can fabricate to your bill-of-materials order
- Matching brake metal accessories available
- Shop drawings and engineering services available

EXPRESSION+ panels are available in two attachment configurations to fit your design.

Integral Clip Receiver (ICR)
(As shown in Panel Profiles)



Single Cleat Receiver (SCR)

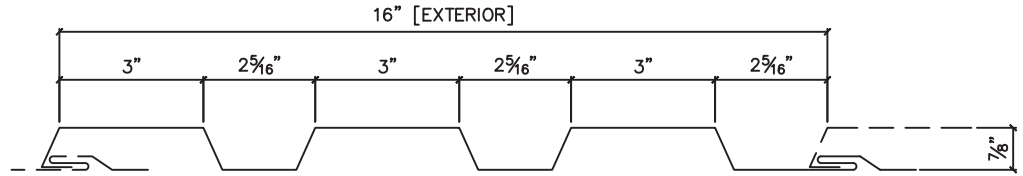


APPLICATIONS

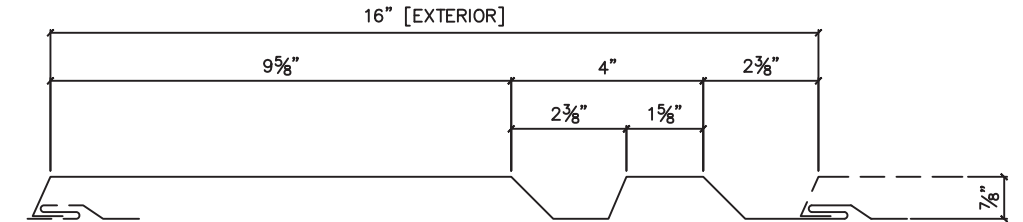
- Walls
- Equipment Screens
- Mansards
- Soffits
- Installs horizontally or vertically
- Install over solid decking or open framing (16" O.C.)

CUSTOMIZATION

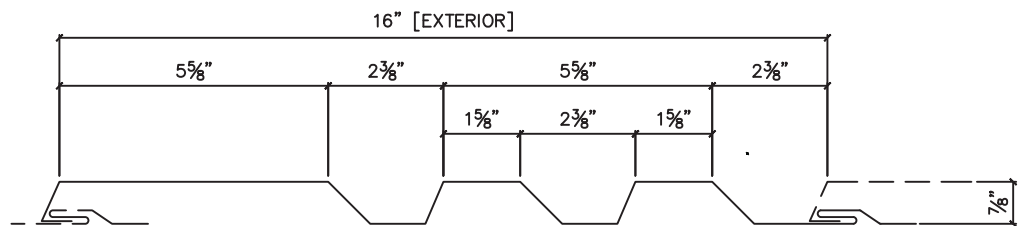
- Contact us for custom panels to include tapered profile designs



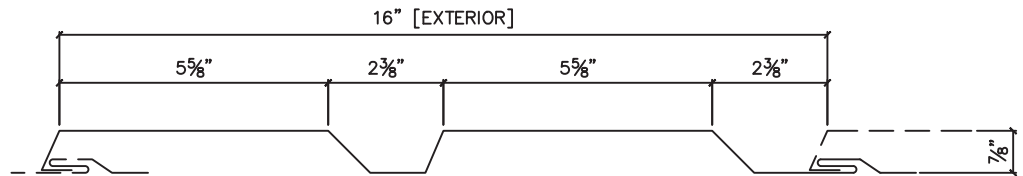
ES+16-101



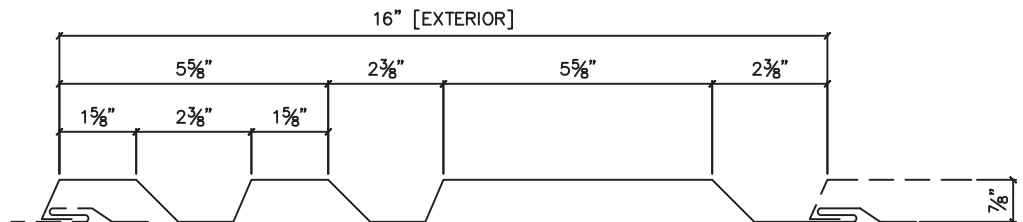
ES+16-102



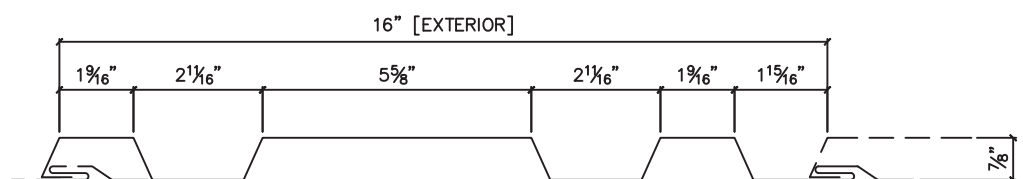
ES+16-103



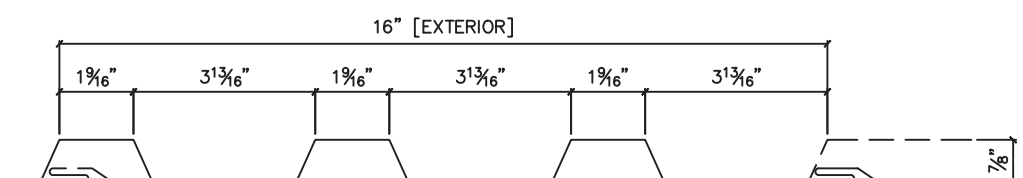
ES+16-104



ES+16-105



ES+16-106



ES+16-107