



**MOSAIC+**  
MODULAR  
PANEL SERIES

**NEXGEN**  
METAL DESIGN SYSTEMS



## Refined Style Meets Superb Quality

The MOSAIC+™ Modular panel system is an architectural back ventilated rainscreen wall panel available in customizable Flat, Tapered or Dimensional shapes. Fabricated with the latest CNC manufacturing technology ensures economical panel precision with design flexibility for complex panel applications.

## Cost Effective Installation and Sustainable

A unique interlocking dry joint design on the MOSAIC+™ modular panel allows the panel to install quickly and easily in the horizontal or vertical orientation without separate gaskets or metal splines. Panels are available in both .050" and .060" aluminum. Contact NEXGEN for stainless steel, zinc, and copper options. MOSAIC+™ is 100% recyclable and LEED compliant.



The usability of MOSAIC+™ lends itself to all custom designs including shapes, perforations, dimensions, and tapers.

Tests pending for ASTM E-283, ASTM E-330, and ASTM E-331.  
Patent Pending

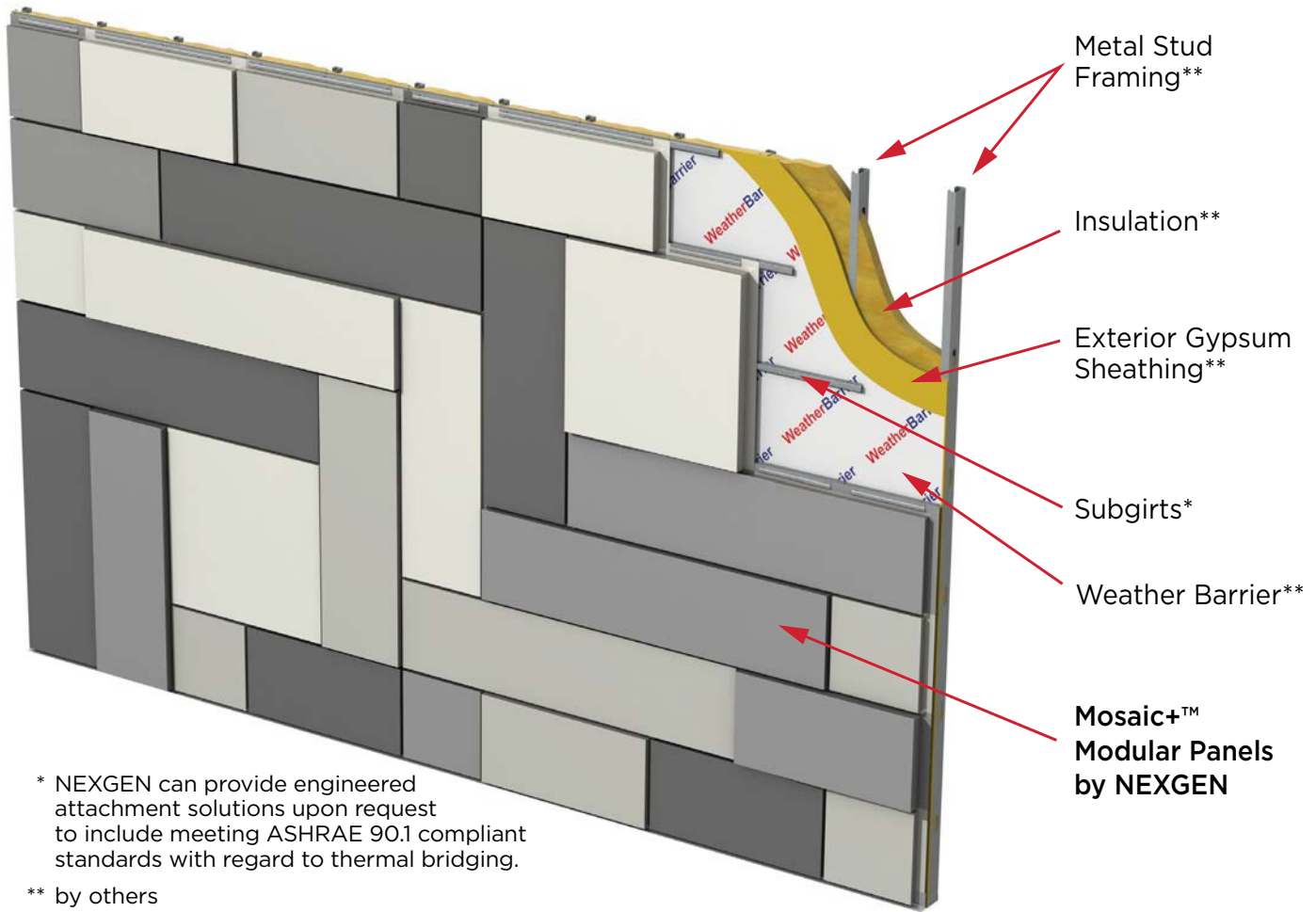


## MOSAIC+™ Modular Panels are ideal for:

- Office Buildings
- Healthcare Facilities
- Recreational Buildings
- Educational Facilities
- Other Commercial Buildings



# MOSAIC+™ MODULAR PANEL – CUTAWAY

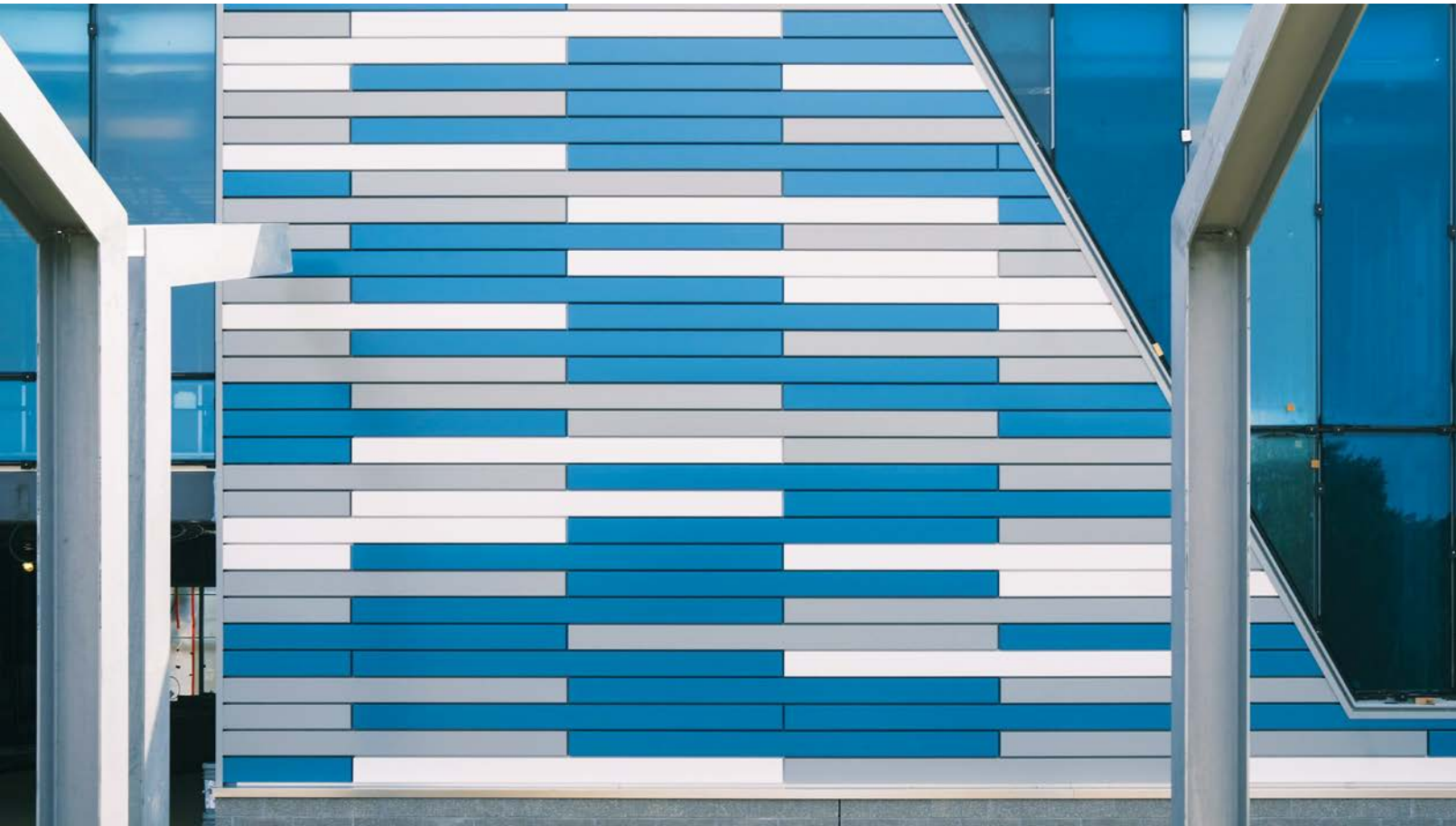


## MOSAIC+™ MODULAR ALUMINUM PANEL DESIGN OPTIONS

Material	Material Thickness	Panel Depth	Reveal Width	Panel Width	Panel Length	Available Finishes
Aluminum	0.50" 16 Ga. 0.63" 14 Ga.	1-1/2" Standard	5/8" Standard 3/4" Available	4" - 42"	8" - 144"	Precoated PVDF Solids, Micas, Metallics, Prints
Aluminum	0.50" 16 Ga. 0.63" 14 Ga.	2-1/4"	5/8" Standard 3/4" Available	4" - 40.5"	8" - 144"	Precoated PVDF Solids, Micas, Metallics, Prints
Aluminum	0.50" 16 Ga. 0.63" 14 Ga.	3"	5/8" Standard 3/4" Available	4" - 39"	8" - 144"	Precoated PVDF Solids, Micas, Metallics, Prints

### Notes:

- Maximum panel module and length cannot be combined on the same panel. Contact a NEXGEN representative for custom sizes, depth, and finishes.
- Panels are available in rectangular and square shapes.
- A 4" panel dimension cannot be used on both sides of a panel.
- Prefinished PVDF coated aluminum is available with a 20 year paint finish warranty.
- MOSAIC+™ modular panels come with a standard 2-year manufacturer's workmanship warranty.
- Panels may be installed over 3/4" plywood, precast, 18 Ga. or 16 Ga. metal studs and most pre-engineered sub-framing.
- Shop and installation drawings, factory formed panels, and related trim are available per project design.
- NEXGEN includes structural design analysis to confirm maximum module sizes, and fastening attachment to the substrate.
- NFPA 285 compliant - Additional testing pending.



DESIGN ASSISTANCE  
BUDGETARY ANALYSIS  
CONSTRUCTABILITY REVIEWS  
SHOP DRAWINGS  
INSTALLATION DRAWINGS  
REALITY CAPTURE LASER SCANNING  
3D DESIGN/BIM



22 Rutgers Road, Suite 201 ■ Pittsburgh, PA 15205

412.458.3832 ■ [nexgendesignsystems.com](http://nexgendesignsystems.com)